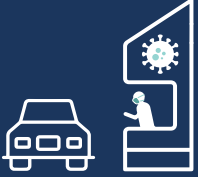


# HELP STOP THE SPREAD OF COVID-19

What You Need to Know About COVID-19 Today | 5.08.20

## FREE COVID-19 TESTING



**COVID-19 testing** is free and open to the public in locations all over Shelby County. Just call ahead and schedule an appointment.

Check here for testing locations:

[www.covid19.memphistn.gov](http://www.covid19.memphistn.gov)

## WHO SHOULD GET TESTED



COVID-19 testing is available to individuals who feel sick, have had contact with someone who has tested positive or is part of the essential workforce. **Symptoms of COVID-19 vary** and may be pretty mild. For information about essential worker testing, please see the back of this flyer. Questions? Call the Shelby County Hotline: **(833) 943-1658**

## SOCIAL DISTANCING



Stay **at least six feet away** from other people to stop the spread of the coronavirus. By staying six feet apart, wearing a mask when you go out, washing hands frequently, and staying at home except when you must go out (work, grocery store, doctor's office, pharmacy), you will keep yourself safe and people around you safe.

## PROTECT THE MOST VULNERABLE



Anyone at any age can get coronavirus. People who have conditions, such as diabetes, high blood pressure or heart problems, **are at greater risk of getting coronavirus**. Please take social distancing seriously, and look out for others!



# COVID-19 TESTING FOR ESSENTIAL EMPLOYEES



**Regardless of symptoms, all frontline workers who are concerned about possible COVID-19 exposure or who feel sick can be tested at no cost.**

The following workforces are included:

- Healthcare
- First responders, such as paramedics, emergency medical technicians, law enforcement officers or firefighters.
- Grocery stores, fast food, gas stations, pharmacies, restaurants
- Correctional facilities, such as jails or prisons
- Public utilities, and sanitation.

To find a testing location near you, visit [covid19.memphistn.gov](https://covid19.memphistn.gov) or contact the following testing locations for availability.

- **CASE MANAGEMENT, INC**  
901.821.5880  
[COVID-19TestCMI@cmiofmemphis.org](mailto:COVID-19TestCMI@cmiofmemphis.org)
- **CHEROKEE HEALTHCARE**  
[krogerhealth.com/covidtesting](https://krogerhealth.com/covidtesting)
- **MEMPHIS HEALTH CENTER**  
901.261.2042
- **CHURCH HEALTH**  
901.272.0003
- **WALGREENS**  
Schedule online [walgreens.com/coronavirus](https://walgreens.com/coronavirus)
- **CHRIST COMMUNITY HEALTH SERVICES**  
Text "Test2020" to 91999
- **TRI STATE COMMUNITY HEALTH CENTER**  
901.572.1573
- **UNIVERSITY OF TENNESSEE HEALTH SCIENCE CENTER**  
Text "COVID" to 901-203-5526 or  
[www.mycareplan.net/covid-19](https://www.mycareplan.net/covid-19)



**CITY OF MEMPHIS  
SHELBY COUNTY  
JOINT COVID TASK FORCE**



**Public Health**  
Prevent. Promote. Protect.  
Shelby County Health Department